



Shoalhaven
City Council

HYAMS BUSHCARE ACTION PLAN

CONTACT INFORMATION

Group Name:	Hyams Bushcare Group
Contact:	John Goodwin
Address:	9 Cyrus St Hyams Beach
Tel:	4443 9317
Email:	
Reserve Name:	Seamans Beach & Foreshore Reserve No: BHY521 & BHY607
Land Tenure:	Crown & SCC
Comm. Land Type:	NA - Foreshore

1. BUSHCARE GROUP GOALS

The aims of the Hyams Bushcare Action Plan are as follows:

1. Regeneration and weed removal on Council owned and managed reserves in and surrounding Hyams Beach.
2. Reverse the decline in large stand of 36 mature *Eucalyptus botryoides* trees that have become degraded due to compaction and sheet erosion of the surface feeder roots on the crown foreshore reserve opposite house numbers 37 to 45 Cyrus St. One of the aims of the project is to also remove the mowing pressures from within the stand of Bangalay to allow for the recruitment of the next generation of Bangalay Gums to replace old and dying specimens, as per the recommendations the Tree Evaluation and Management Report for the Remnant Stand of *Eucalyptus botryoides*, Cyrus St Reserve, Hyams Beach Jervis Bay, Nov 2001, Maree Ellis.

2. SHOALHAVEN BUSHCARE GROUP ACTION PLAN (to be included with site map)

NOTE: Priority should be rated as H = High (within 12 months); M = Medium (1-3 years); L = Low

GROUP ACTION	PRIORITY	METHOD	TIME
<p>AREA A - Cyrus St & Silver Strand Council Reserve ACTIONS</p> <ol style="list-style-type: none"> 1. Hand pull isolated <i>Senna pendula</i> plants. 2. Cut and stem scrape all Morning glory plants that are climbing and leave.. 3. Remove all Morning Glory runners on the ground and bag & remove from site 4. Spray isolated Pampas grass with Glyphosate at a rate of 1:100 when plant is actively growing, Spring to autumn 5. Hand removal of Montbretia infestation along car park edge.. 6. Work up stream into Silver Strand Reserve undertaking weed control targeting Senna, Pampas Grass, Kikuyu and Paspalum and any other garden escapee weeds. 	<p>H</p>	<ul style="list-style-type: none"> • Foliar spray at recommended rates 	<p>When plant is actively growing</p> <p>Spray in Spring and hand removal & Cut and Paint all year round</p>

GROUP ACTION	PRIORITY	METHOD	TIME
<p>AREA B - Actions for Council Cyrus St Reserve (cliff face between house No's 96 – 88 Cyrus St)</p> <ol style="list-style-type: none"> 1. Hand removal of all <i>Senna pendula</i> and <i>Leonotissibiricus</i> from site 2. Hand removal of Asparagus Fern & Crofton using crowning methods, be sure to remove all red berries and crowns from site <p>Note please contact The Shoalhaven Bushcare coordinator for the collection of weed bags or use your Bushcare tip pass to take to local waste depot</p>		<ul style="list-style-type: none"> • Scrape and paint climbers • Hand pull all climbers on ground level • Foliar spray at recommended rates 	<p>When plant is actively growing</p> <p>Spray in Spring and hand removal & Cut and Paint all year round</p>

GROUP ACTION	PRIORITY	METHOD	TIME
<p>AREA C - Cyrus St Crown Foreshore Reserve E. <i>botryoides</i> remnant stand regeneration :</p> <ol style="list-style-type: none"> 1. Consult with the Hyams Beach Village Association and the residents living opposite the reserve about the project aims. 2. Work in cooperation with SCC Parks Operations Unit to maintain the recreational and amenity values of the reserve. 3. Aerate compacted areas around the base of trees without damaging feeder roots 4. Apply well composted mulch to regeneration area at a depth of 100mm max in areas marked on plan or to a minimum of 10m radius around each Eucalypt 5. Council to supply mulch to top up the area on a needs be basis 6. Supplement planting of groundcovers around the borders of the mulch/grassed areas to define boundary 7. Bushcare group to plant single E. botryoides (Bangalay Gum) if there is no natural regenerate to replace single older decaying Bangalays. These should be strategically planted to so not to block the existing views lines. Removal of all mid story species and selective culling of emerging E. botryoides to maintain existing framed views as per the policy statement in section 3.6 of the SCC Foreshore Reserves Policy: 	<p>M</p>	<ul style="list-style-type: none"> • Bushcare Group and SCC to consult • Bushcare Coordinator to consult with Park Coordinator • Bushcare to aerate soil with pitch forks supplied by SCC • SCC to supply mulch and Bushcare Group to spread • SCC to supply plants and Bushcare Group to plant and maintain/or collect seed from site • Bushcare Group to undertake selective culling of mid story and emerging Eucalyptus in cooperation with Bushcare Coordinator • Bushcare Group to maintain regeneration area by spot spray emerging exotic grasses 	<p>On going</p>

GROUP ACTION	PRIORITY	METHOD	TIME

GROUP ACTION	PRIORITY	METHOD	TIME
<p><i>“Where Council is required to revegetate foreshore lands in response to erosion or other identified environmental threat, it shall revegetate with a mix of tall and low growing plants with a view to preservation of amenity for residents.”</i></p> <p>8. On going spot spraying of exotic grasses within the regeneration area, particularly along the mown interface.</p> <p>9. On the bushland embankment removal of environmental and noxious weeds including Honeysuckle, Montbretia, Ochna and Crofton Weed and exotic grass.</p>		<ul style="list-style-type: none"> • Bushcare Group to remove weeds on embankment using a combination of spot spraying, hand removal and scrape and paint. 	On going

GROUP ACTION	PRIORITY	METHOD	TIME
<p>AREA D – Hyams Village Boat Ramp ACTIONS</p> <ol style="list-style-type: none"> 1. Plant out immediate bank adjacent to boat ramp access road, on seaward side using species from attached list. 2. Continue to spot spray out Buffalo Grass around plantings as well as maintain the plantings. 3. Control and removal of Senna and Montbretia and leave Wandering Jew until last. 4. Plant low laying gully area using following species for the bottom section: <ol style="list-style-type: none"> a. Satalia obtusifolium (Sandlewood) b. Banksia integrifolia (Coastal Banksia) c. Myoporum acuminatum (Boobialla) 5. Use the following understory species to plant in the area: <ol style="list-style-type: none"> a. Lomandra longifolia (Spiny Matt Rush) b. Themeda australis (Kangaroo Grass) c. Dianella spp (Native Flax) d. Hibbertia scandens (Climbing Guinea Flower) e. Other native understory species that do not exceed 1 metre in height 	<p>M</p>	<ul style="list-style-type: none"> • Plant at densities of 2-3 plants per square metre. • Spray with glyphosate 1:100 ratio in winter • Cut and paint and herbicide control • Plant in clumps of 10 – 15 at a time • As weed are removed 	<p>Autumn Winter Spring – Summer Autumn</p>

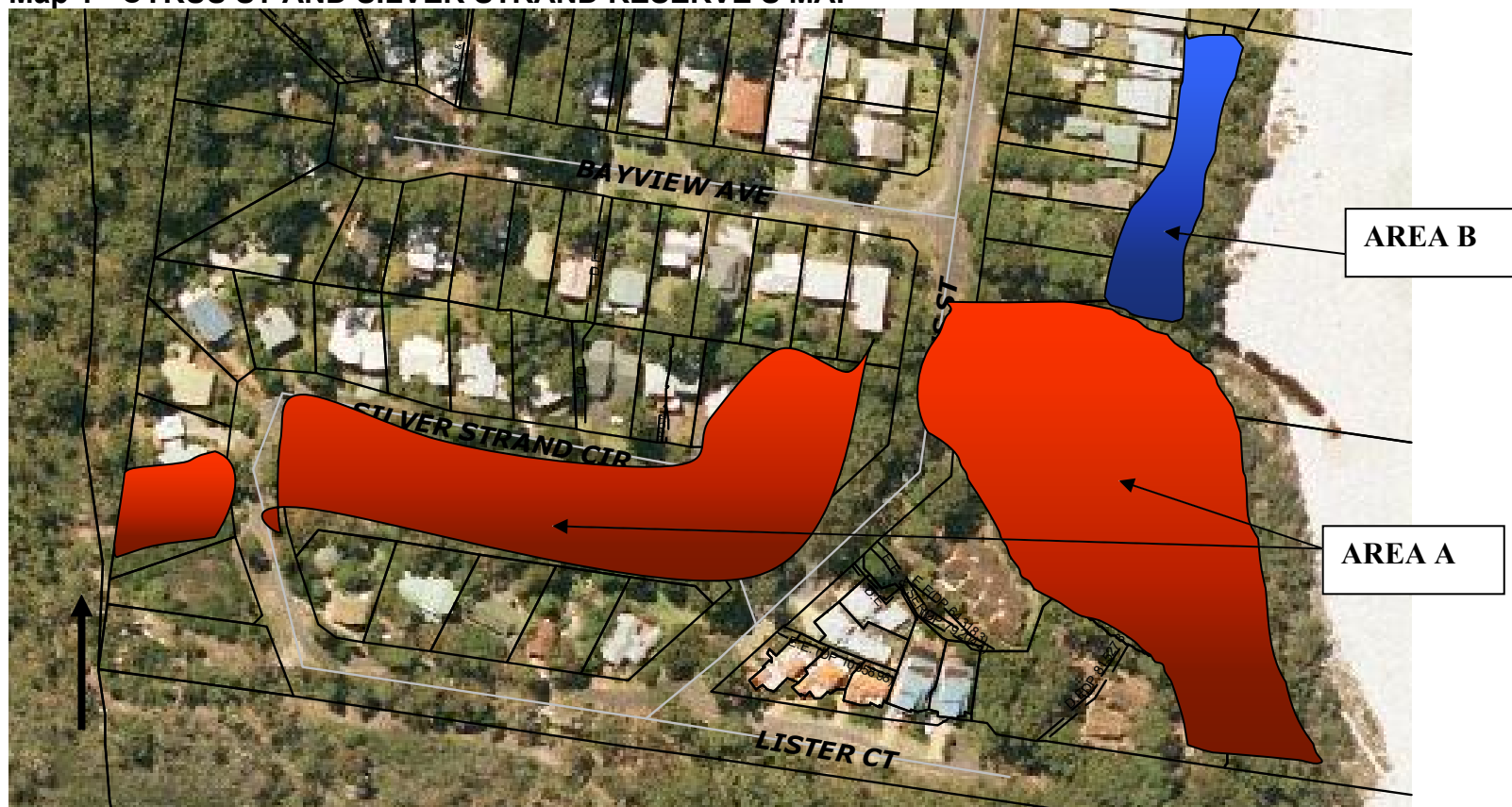
GROUP ACTION	PRIORITY	METHOD	TIME
<p>AREA E – Vegetated area on foreshore reserve opposite Cyrus St, from boundary of Jervis Bay National Park to Navy compound.</p> <p>ACTIONS</p> <ol style="list-style-type: none"> 2. General weed control Blackberry, Honeysuckle, Ochna, Mistflower, Formosan Lily, Senna and Fishbone Fern and annual weeds. 3. Spot spray out Buffalo grass only where it is smothering native plants. 4. Revegetate areas where weeds have been removed using low growing species as follows: <ol style="list-style-type: none"> a. Lomandra longifolia (Spiny Matt Rush) b. Themeda australis (Kangaroo Grass) c. Dianella spp (Native Flax) d. Hibbertia scandens (Climbing Guinea Flower) 5. Council to monitor planting in this area. 6. Retain all dead vegetation on site. 7. Monitor the small erosion issues adjacent to National Park. 8. Only work on moderate slopes. 	<p>L</p>	<ul style="list-style-type: none"> • Scrape and paint climbers • Hand pull all climbers on ground level • Foliar spray at recommended rates 	<p>When plant is actively growing</p> <p>Spray in Spring and hand removal & Cut and Paint all year round</p>

GROUP ACTION	PRIORITY	METHOD	TIME
<p>AREA F –Upgrading of the Lookout area between property numbers 64, 66 & 68, 70.</p> <p>ACTIONS</p> <ol style="list-style-type: none"> 1. Consult with adjacent property owners and the Hyams Beach Village Association to apply for a Shoalhaven Tourism Grant to undertake the following: <ol style="list-style-type: none"> a. Removal of Climbing Groundsel (Senecio angulatus) b. Rubbish removal c. Soft landscaping of the area with hardy coastal native plants to improve the amenity d. Installation of a bench seat e. Design and installation of educational sign. f. Installation of lookout sign at Cyrus St to indicate area. 	<p>L</p>	<ul style="list-style-type: none"> • Bushcare to work with property owners and Village Association to gain support for grant application • Bushcare group and Council Bushcare Officer to complete application. 	<p>2010 and on going</p>

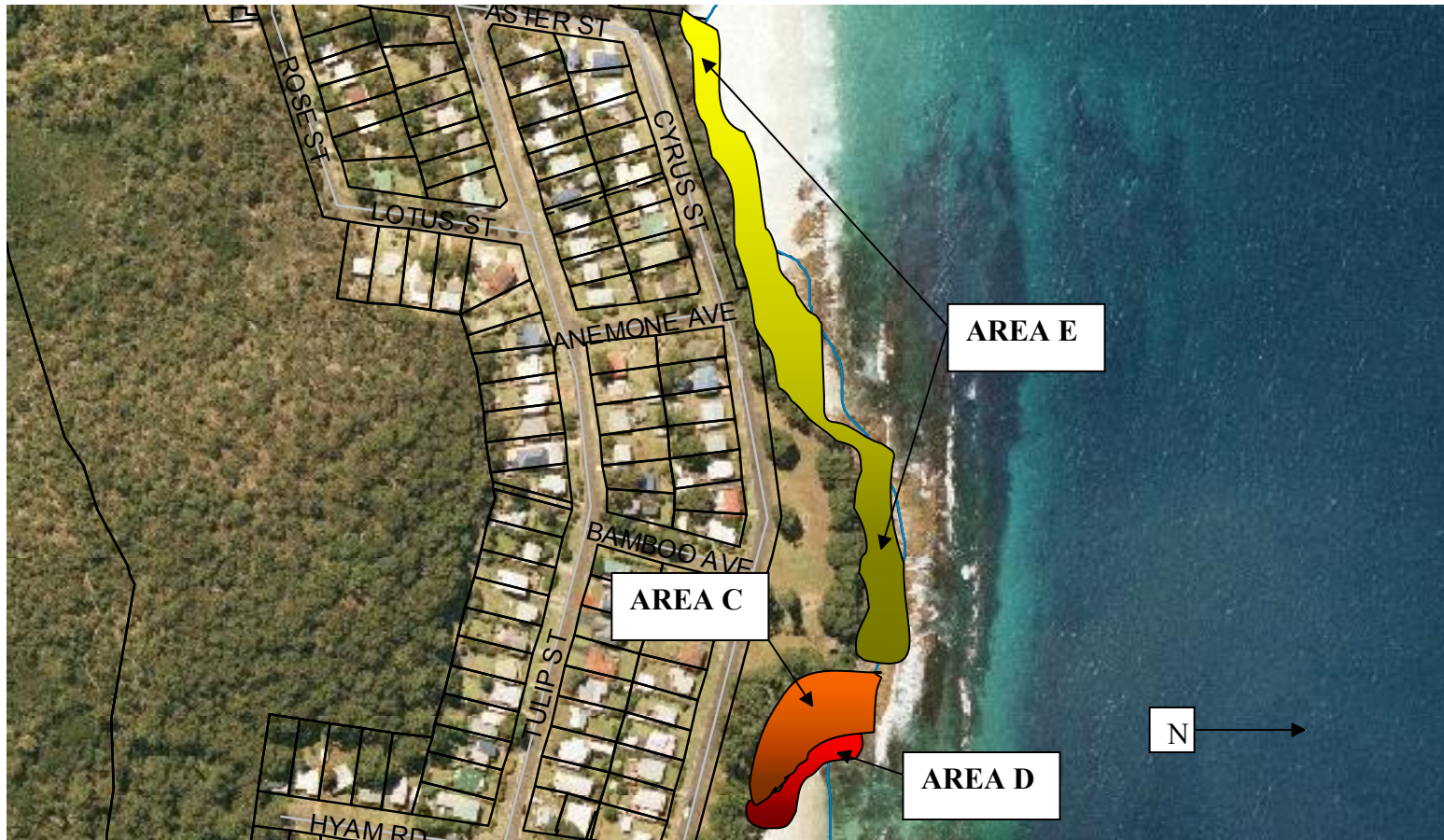
GROUP ACTION	PRIORITY	METHOD	TIME
<p>AREA G – Patches of remnant native vegetation on foreshore reserve between property numbers 52 and 82 Cyrus St.</p> <ol style="list-style-type: none"> 1. Council Bushcare Officer to use hand held GPS to indicate rear boundaries of 52 to 82 Cyrus St 2. Undertake general weed control on areas of public land. 3. Write to private landholders seeking support with weed control. 		<ul style="list-style-type: none"> • Bushcare Officer to train members of Bushcare in basic GPS use to ascertain the location of the boundaries • Bushcare group to undertake weed control • Council to write to property owners once priority weeds have been identified. 	2010 and on going

3. BUSHCARE GROUP ACTION PLAN MAP.

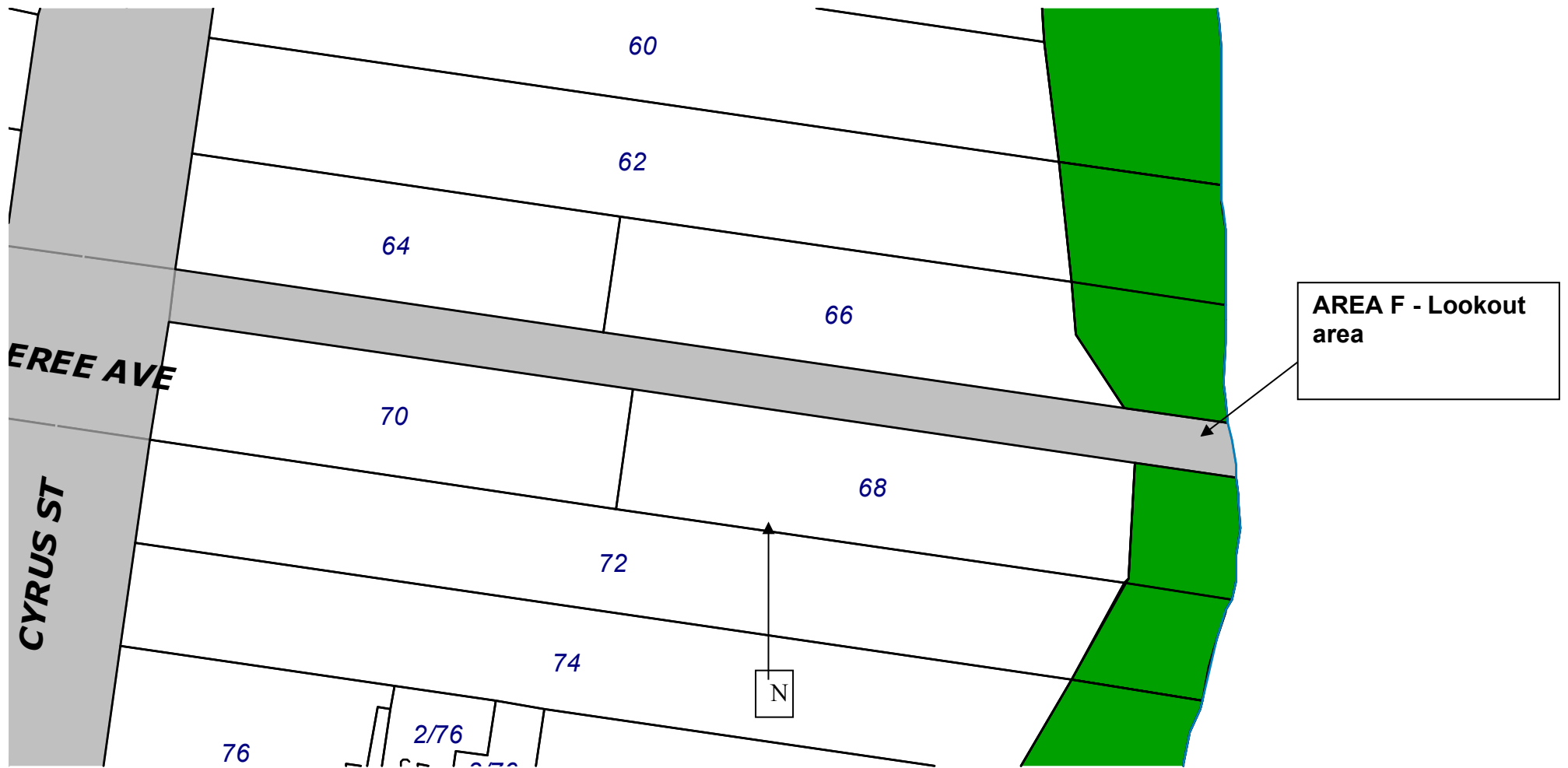
Map 1 - CYRUS ST AND SILVER STRAND RESERVE'S MAP



Map 2 - Cyrus St Crown Reserve & Boat Ramp Site Plan – See additional map 3 from the Cyrus St Reserve Tree Evaluation & Management Report (please indicate North and include all existing work done to date)

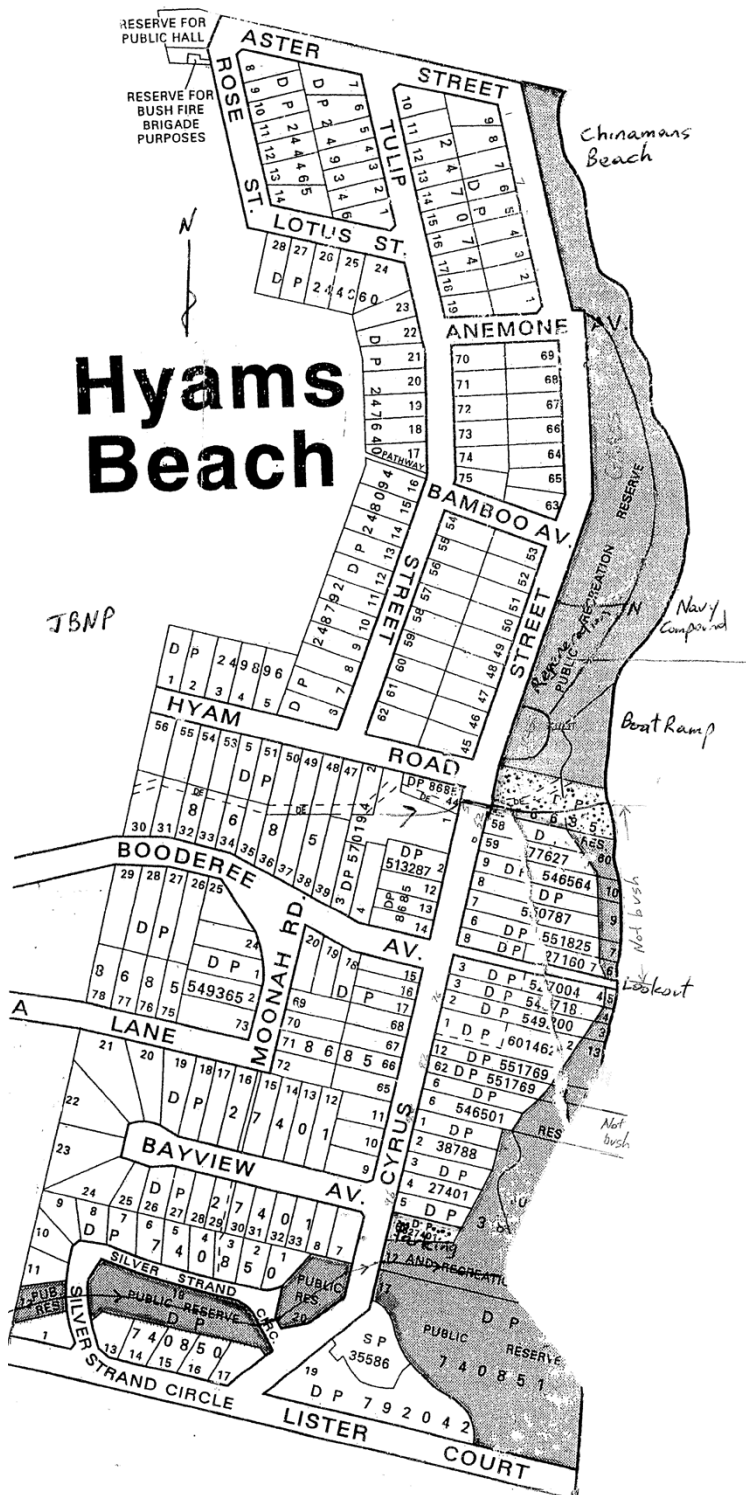


Map 2 – Cyrus St and Boat Ramp Crown Reserves



Map 3 – Lookout at the end of Booderee Lane (Access easement between 64, 66 & 70, 68 Cyrus St).

Map 4 – Weeds of the Hyams beach foreshores reserves



JBNP. Weeding
 Area E
 Buffalo grass
 Blackberry
 Fleabane
 Nightshade
 Fishbone fern

Senna
 Formosan Lily
 Mist Flower
 Blackberry

variegated
 Ochra
 Honeysuckle
 E
 Monbretia
 Kikuyu

C
 D
 Buffalo grass
 Wandering Jew
 Shivery grass
 Arum Lily
 Monbretia
 Nasturtium
 Asparagus Fern
 Mother of Millions

G
 F
 Senna
 Ivy
 climbing groundsel

Blackberry
 Honeysuckle
 Crofton weed

B
 Monbretia
 Crofton weed
 Vetch
 Leonotis
 Senna
 Monbretia
 morning glory
 blackeye susie
 pampas

Area A

JBNP 1/2010

4. VOLUNTEER ACTIVITIES RELATED TO THE ACTION: (TICK THE ACTIVITIES THAT THE GROUP VOLUNTEERS ARE LIKELY TO BE DOING AS PART OF THE ACTION PLAN)

Type of Activity	Yes	No	SWMS name included
Manual weed control (cut & paint, scrape and paint etc)	√		SWMS NR060
Chemical control (spraying of herbicides)	√		SWMS NR040
Planting	√		
Minor construction (walking track, fencing, outdoor furniture)	√		NA
Propagation & seed collection	√		
Education (school groups, field days etc)			
Other			

5. COUNCIL ACTIVITIES RELATED TO THE ACTION PLAN

- a. Supply glyphosate, tools, weed bags and OH&S equipment
- b. Assistance with preparation Landscape plan
- c. Assistance with funding application
- d. Contract management
- e. Supply of mulch and plants (approx 30 – 50 m²)

6. HAS A SITE HAZARD AND RISK ASSESSMENT BEEN COMPLETED FOR THE BUSHCARE SITE?

Yes

7. LIST THE PERSONAL PROTECTION EQUIPMENT REQUIRED FOR VOLUNTEERS WHILST WORKING ON THE SITE

PPE Equipment Required	Issued	Date
First Aid Kit	Yes	19/06/2006
Gloves	Yes	19/06/2006
Sunscreen	Yes	19/06/2006
Insect repellent	Yes	19/06/2006

8. POSSIBLE FUTURE FUNDING

Project	Funding source
Booderee Lookout Area F	Shoalhaven Tourism Grant

**9. PLAN WILL BE DUE FOR REVIEW:
APRIL 2013.**

10. LIST OTHER LOCAL/REGIONAL MANAGEMENT PLANS OR STRATEGIES THAT THIS PLAN RELATES TO:

DOCUMENT NAME	YEAR PRODUCED	PRODUCED BY
Coastal Asset Plan		Shoalhaven City Council
Draft Shoalhaven Coastal Management Plan		Shoalhaven City Council
Generic Community Land – Natural Areas Plan of Management	2002	Shoalhaven City Council
Shoalhaven Foreshore Reserve Policy	2005	Shoalhaven City Council

11. SUGGESTED SPECIES LIST FOR FUTURE SITE REVEGETATION

OVERSTOREY TREES	
Botanical	Common
<i>Eucalyptus botryoides</i>	Bangalay Gum
SHRUBS	
Botanical	Common
Santalum obtusifolium (only in the lower section of area D)	Sandlewood
Banksia intergrifolia (only in the lower section of area D)	Coastal Banksia
Banksia spinullosa	Hairpin Banksia
Myoporium acuminatum (only in the lower section of area D)	Mangrove Boobialla
Acacia suaveolens	Sweet Scented Wattle
Grevillea barkleyana	Jervis Bay Grevillea
Westringia fruticosa	Coastal Rosemary
Correa alba	Native Fuchsia
UNDERSTOREY (grasses, herbs, climbers)	
Botanical	Common
<i>Hardenbergia violacea</i>	Happy Wanderer
<i>Hibbertia scandens</i>	Golden Guinea Flower
<i>Kennedia rubicunda</i>	Running Postman
<i>Lomandra longifolia</i>	Spiny Headed Matt Rush
<i>Rhagodia condolleana</i>	Seablite
<i>Scaevola aemula</i>	Fan Flower
<i>Scaevola albida</i>	Coastal Fan Flower
<i>Themeda australis</i>	Kangaroo Grass

12. SITE WEED LIST

Noxious	Other	Control Method
Pampas Grass		Spray glyphosate 1:100 during Spring Summer
	Honeysuckle	Scrape & Paint and Spray 1:100 glyphosate during winter spring
Morning Glory		Scrape & Paint and manual removal and bag